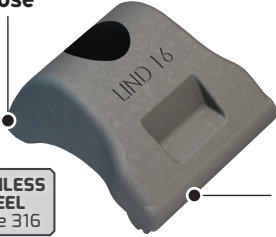


Type LS

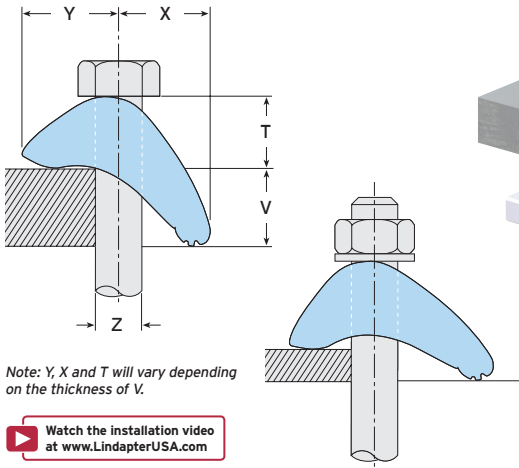
Providing excellent corrosion resistance, Lindapter's stainless steel clamp self-adjusts to suit a range of flange thicknesses.

Nose



Tail

STAINLESS STEEL Grade 316



Note: Y, X and T will vary depending on the thickness of V.

▶ Watch the installation video at www.LindapterUSA.com



- Made from high strength stainless steel grade 316.
- Self-adjusts to suit a range of flange thicknesses.
- For parallel and tapered flanges up to 10°.
- The tail spans slotted clearance holes.

▶ See page 21 for the packing pieces available to increase the clamping range, as well as location and end plate details.

Material: Cast stainless steel grade 316.



Product Code	Bolt A4-70 Z	Safe Working Loads		Tightening Torque*	Clamping Range ²⁾ V	Dimensions			Width
		Tensile Resistance / 1 Bolt (FOS 5:1) lbs	Slip Resistance ¹⁾ / 2 Bolts (FOS 2:1) lbs			Y	X	T	
LLS037	3/8"	675	337	30	1/8" - 9/16"	5/8" - 3/4"	11/16" - 15/16"	5/8" - 13/16"	1 1/2"
LLS050	1/2"	1574	450	60	1/8" - 13/16"	5/8" - 7/8"	11/16" - 1 1/8"	5/8" - 7/8"	1 9/16"
LLS062	5/8"	2248	675	148	1/8" - 1"	7/8" - 1"	1 1/16" - 1 7/16"	3/4" - 1 1/8"	2 3/16"
LLS075	3/4"	4047	1124	295	1/8" - 13/16"	15/16" - 1 1/4"	1" - 1 5/8"	7/8" - 1 1/4"	2 3/8"

1) Slip resistance loads calculated against slip (movement exceeding 0.004" / 0.1mm).
 2) For thicker flanges, see the packing pieces on page 21.
 * Torque figures based on bolts / setscrews in an unlubricated condition. For further information on lubricated fasteners see page 58.



Strut & Supply, Inc.
 28005 W. Commercial Ave. Barrington, IL 60010
 Ph: 847.756.4337 Fx: 847.304.1891
 email: CustomerService@strutandsupply.com

GIRDER CLAMPS

RAIL CONNECTIONS

LIFTING POINTS

HOLLO-BOLT

FLOOR CONNECTIONS

PIPE SUPPORTS

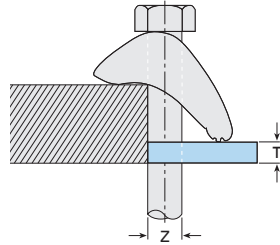
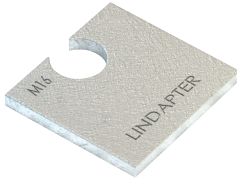
FAQS & CASE STUDIES

Packing Pieces and Plate Details for Type LS

Stainless steel packing pieces are available to increase the clamping range of the Type LS, please select the correct packing combination from the table below. This page also contains information for designing location / end plates.

Packing Pieces

Type LSP2



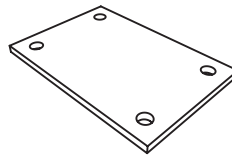
Material: Stainless steel grade 316.

Product Code	Bolt Size Z	Dimension T
LLS037P2	3/8"	3/8"
LLS050P2	1/2"	3/8"
LLS062P2	5/8"	3/8"
LLS075P2	3/4"	3/8"

Location Plate

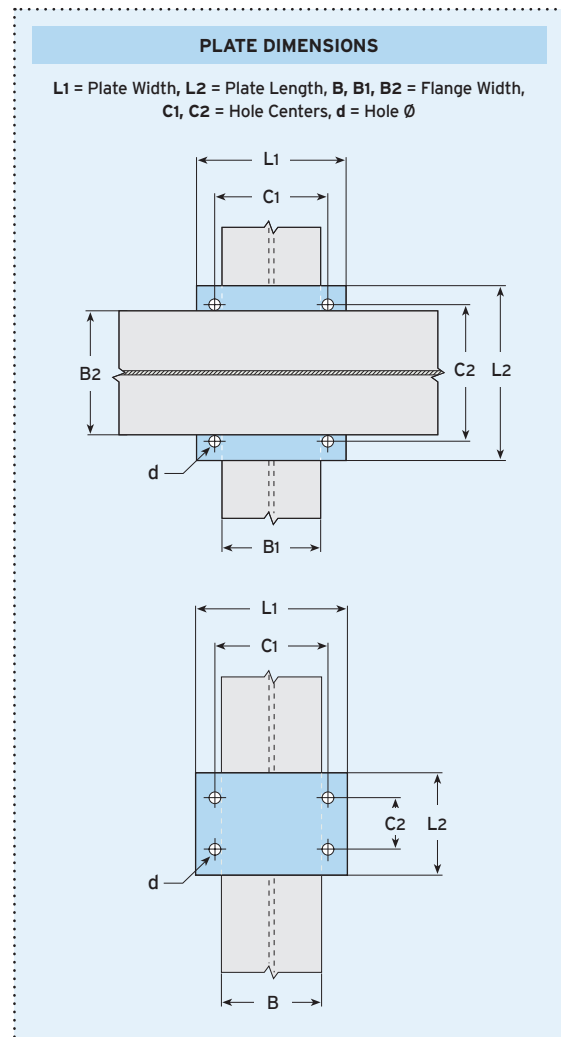
What is it?

Location plates are simple fabricated items designed to sit between the two sections to be clamped together to ensure the bolts are fixed at the correct centers.



Material: Stainless steel grade 316.

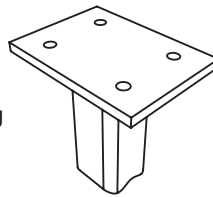
Bolt Size	Hole Ø d	Plate Thickness	Hole Centers C1	Length / Width min L1	Hole Centers C2	Length / Width min L2
3/8"	7/16"	3/8"	B1 + 7/16"	B1 + 2 3/4"	B2 + 7/16"	B2 + 2 3/4"
1/2"	9/16"	1/2"	B1 + 9/16"	B1 + 3 1/8"	B2 + 9/16"	B2 + 3 1/8"
5/8"	11/16"	5/8"	B1 + 11/16"	B1 + 4"	B2 + 11/16"	B2 + 4"
3/4"	13/16"	3/4"	B1 + 13/16"	B1 + 5 1/8"	B2 + 13/16"	B2 + 5 1/8"



End Plate

What is it?

End plates are simple fabricated items that are pre-welded to support frames, bracket or sections, allowing connection to the supporting structure with standard Lindapter clamps.



Material: Stainless steel grade 316.

Bolt Size	Hole Ø d	Plate Thickness ¹⁾	Hole Centers C1	Length / Width min L1	Hole Centers C2	Length / Width min L2
3/8"	7/16"	3/8"	B + 7/16"	B + 2 3/4"	3 1/8"	C2 + 2 3/8"
1/2"	9/16"	5/8"	B + 9/16"	B + 3 1/8"	3 1/8"	C2 + 2 3/8"
5/8"	11/16"	3/4"	B + 11/16"	B + 4"	4 3/8"	C2 + 3 1/8"
3/4"	13/16"	1"	B + 13/16"	B + 5 1/8"	4 3/4"	C2 + 3 9/16"

1) Depending on the type of connection and associated end plate use, the thickness may need to be modified to comply with accepted local design codes.

Use Lindapter's Bolt Length Calculator on [page 6](#) to calculate the correct bolt length for your application.