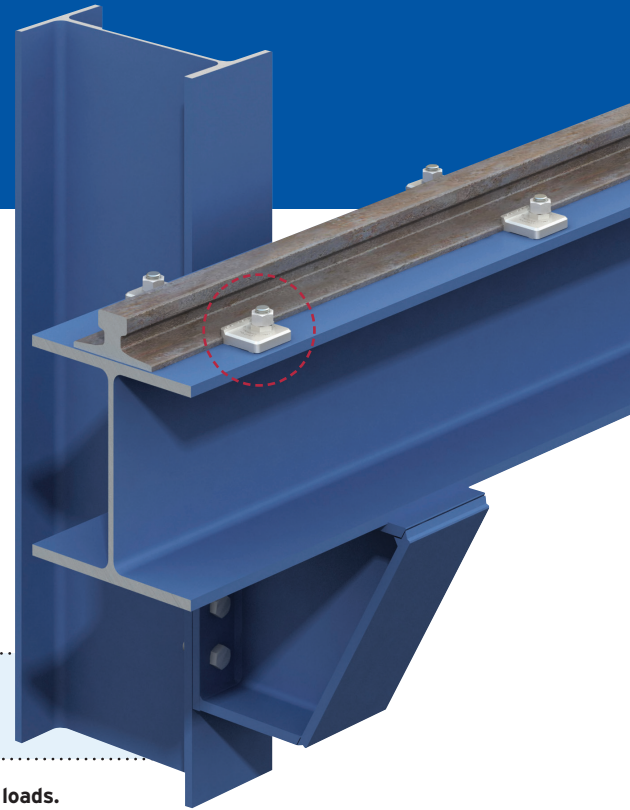
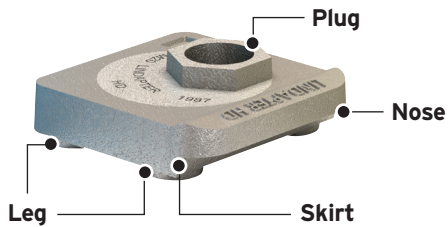


Type HD

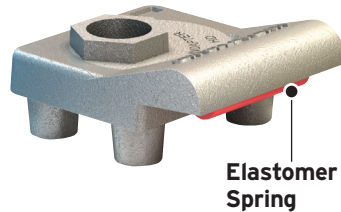
This convenient connection provides lateral adjustability for fast and precise rail alignment in low speed applications.



Type HD Hard / Soft Clip



Type HD Spring Clip



- Suitable for all rails with tapered flanges and crane speeds up to 200ft/min.
- Safely and easily secures rail using only hand tools.

▶ Contact Lindapter for wheel loads above 89.9 kips or lateral loads higher than wheel loads.

Type HD Product Comparison

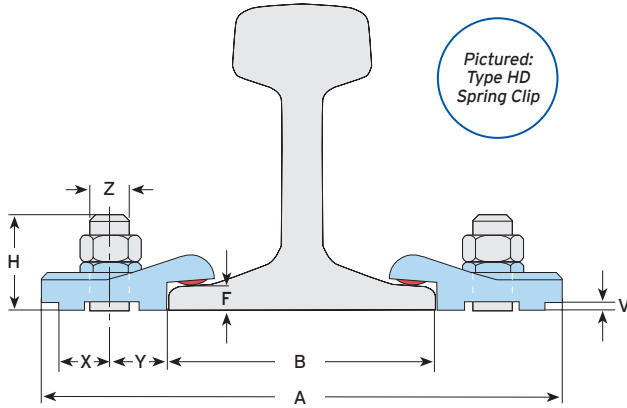
The table shows the three options available. Each product has specific properties, please contact Lindapter for more details.

	Product Variants		
	Type HD Soft Allows rail wave Code: LHD075H	Type HD Hard Clamps rail down tightly Code: LHD075S	Type HD Spring Includes elastomer spring Code: LHD075SP
Precise lateral adjustability	✓	✓	✓
High strength SG Iron material	✓	✓	✓
Various corrosion protection options	✓	✓	✓
High resistance to lateral loads	✓	✓	✓
Allows vertical rail / rail wave movement	✓	-	✓*
Reduces track running noise	-	-	✓
Suitable for use with a resilient pad	✓	-	✓

* The elastomer spring with a Shore A hardness of 90-97 provides some vertical restraint to the rail while still allowing it to lift with rail wave.

Type HD Technical Data

Type HD is suitable for all rails with tapered flanges and crane speeds up to 200 feet per minute. Please contact Lindapter for wheel loads above 89.9 kips or lateral loads higher than wheel loads.



Type HD Preparation

Before installing, ensure the hexagon on the plug is at the 3 o'clock position before tightening.

Doing so allows lateral adjustment (L) towards and away from the rail.

The nut shown is in the 3 o'clock position.

Material: SG iron, corrosion protection as requested.

Clip Type	Product Code	Bolt Grd.5 Z	Normal Lateral Conditions		High Lateral Conditions		Leg Length ³⁾ V	Stud Length ³⁾ H	Dimensions		Distances ¹⁾		Width W
			SWL (FOS 4:1) lbs	Tight. Torque* ft lb	SWL (FOS 4:1) lbs	Tight. Torque* ft lb			Lateral Adjust. L	Plate Width min. A	Y	X	
Hard	LHD075H ²⁾	3/4"	5060	136	10340	332	F - 5/16"	F + 11/2"	+/- 7/16"	B + 53/8"	13/16"	11/16"	215/16"
Soft	LHD075S	3/4"	5060	136	10340	332	F - 3/16"	F + 19/16"	+/- 7/16"	B + 53/8"	13/16"	11/16"	215/16"
Spring	LHD075SP	3/4"	5060	136	10340	332	F - 5/16"	F + 19/16"	+/- 7/16"	B + 53/8"	13/16"	11/16"	215/16"

1) Based on plug set at 3 o'clock position.
 2) Not suitable for use with a resilient pad.
 3) Please specify the required leg length (V) when ordering. If you are using the resilient pad, increase the leg length and stud length (H) by the thickness of the pad.
 * Torque figures based on bolts / setscrews in an unlubricated condition. For further information on lubricated fasteners see page 58.

How to install...

- 1) Position the HD clip on the bolt or stud, ensuring the plug is at the 3 o'clock position, place a hexagon nut and loosely tighten.
- 2) Rotate the plug in a clockwise direction to locate the clip against the rail. Laterally adjust the rail if required.
- 3) Tighten the hexagon nut to the recommended torque.

Watch the installation video at www.LindapterUSA.com