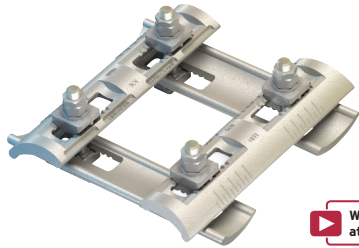
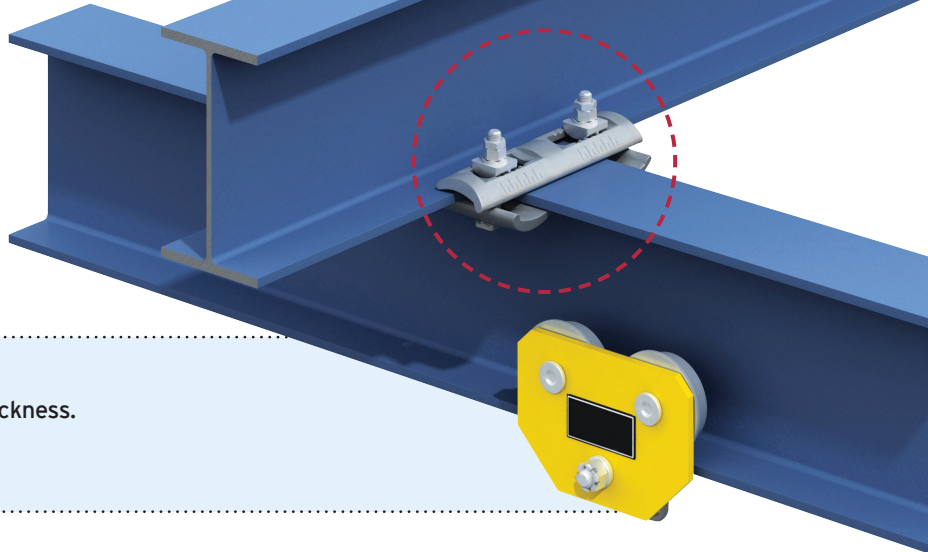


Type FC - Flush Clamp

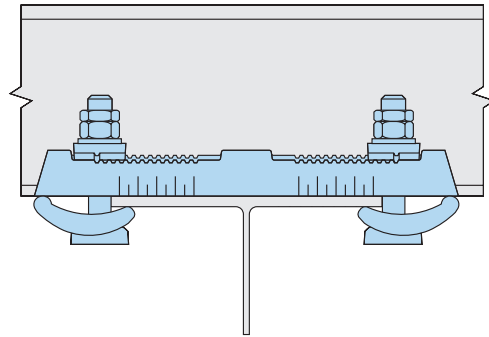
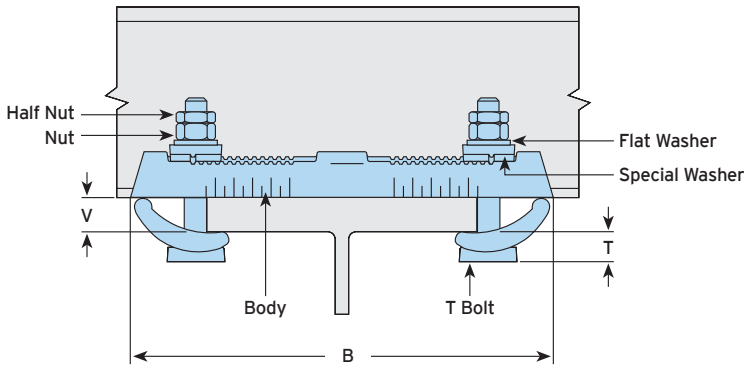
A full connection system that adjusts to fit a variety of beam types. This pre-configured assembly does not require a location plate and is ready for assembly 'out of the box'.



▶ Watch the installation video at www.LindapterUSA.com



- 'All-in-one' device for connecting steel sections.
- Adjustable to suit both beam width and flange thickness.
- Quick and easy to install.
- For parallel and tapered flanges up to 10°.



Material: Forged steel, zinc plated plus JS500.

Product Code	Special Bolt Size Z	Safe Working Loads (FOS 5:1)			Tightening Torque* ft lb	Clamping Range		Dimensions	
		Tensile Resistance / 4 Bolts lbs	Slip Resistance / 4 Bolts lbs	Flange Thickness V		Flange Width ¹⁾	T	B	
LFCM16	M16 (5/8")	6744	1686	108	3/16" - 3/4"	3" - 7"	7/8" - 1 1/16"	12"	

1) Depending on beam connection angles (see table below).

Minimum Possible Beam Connection Angles

		Top Beam				
Bottom Beam		3"	4"	5"	6"	7"
Flange Width	3"	45°	50°	55°	65°	75°
4"	50°	50°	55°	65°	75°	
5"	55°	55°	55°	65°	75°	
6"	65°	65°	65°	65°	75°	
7"	75°	75°	75°	75°	80°	

